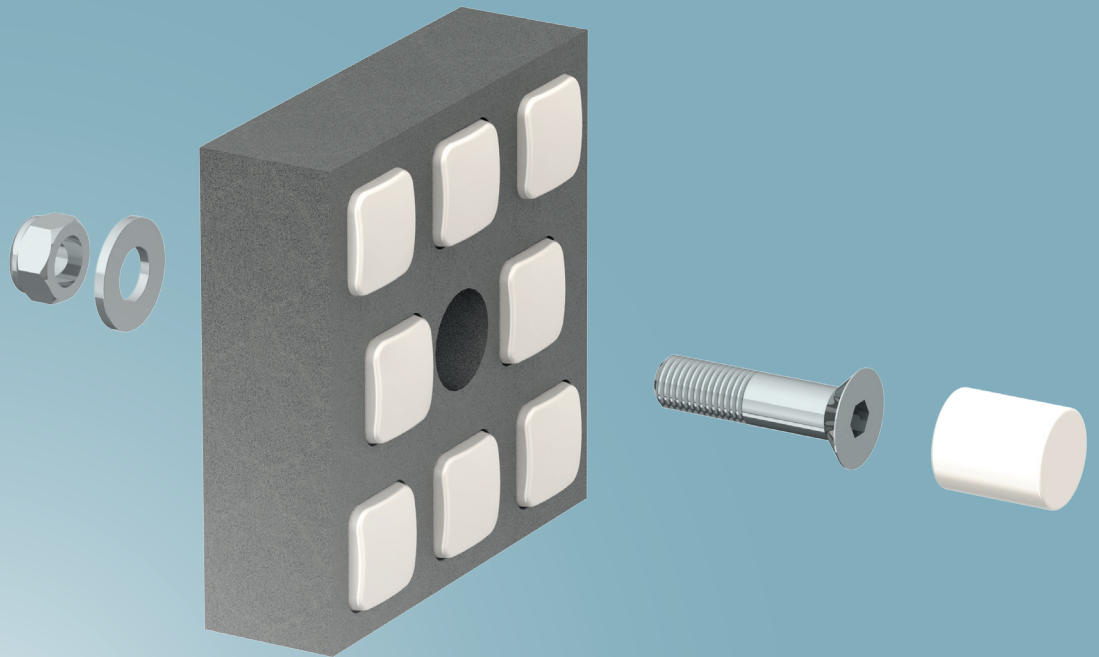


FERROCER® IMPACT WEAR PANELS

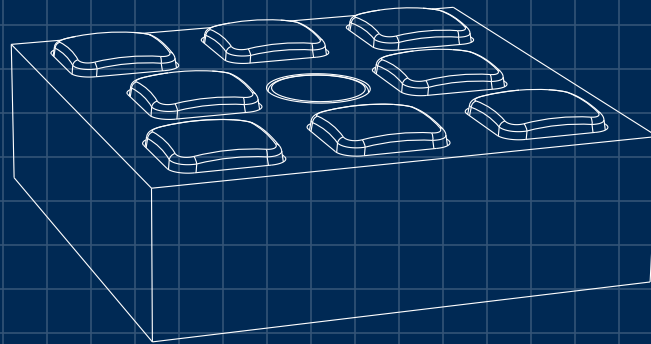
Extend the availability of your crusher, chute or hopper



Predictable productivity in your material world

You're living in a material world. Whether you're a production manager, maintenance manager or procurement manager, you're being measured on your ability to save money for your mine – and you've probably overturned every stone in search of new ways to reduce costs.

At FLSmidth, we've got one more way to slash your maintenance and production costs significantly, while improving productivity and profitability over the long term.



FerroCer® Impact modular wear panels

■
Significantly
longer wear life

■
Reduced
downtime

■
Reduced maintenance
and operating costs

■
Safer and easier
to install

■
Lowest total cost
of ownership

Safe and easy to install

Lowest TCO wear liners

FerroCer® Impact modular wear panels are designed to offer the longest possible wear life, helping you extend your production cycles and bring down your cost per ton. From the moment they are installed, hard-mineral mine operators can reduce maintenance shut-downs, operational downtime and operating costs. This combined with easy installation and affordable pricing means that FerroCer wear panels deliver the lowest total cost of ownership (TCO) on the market.

Patent-pending design

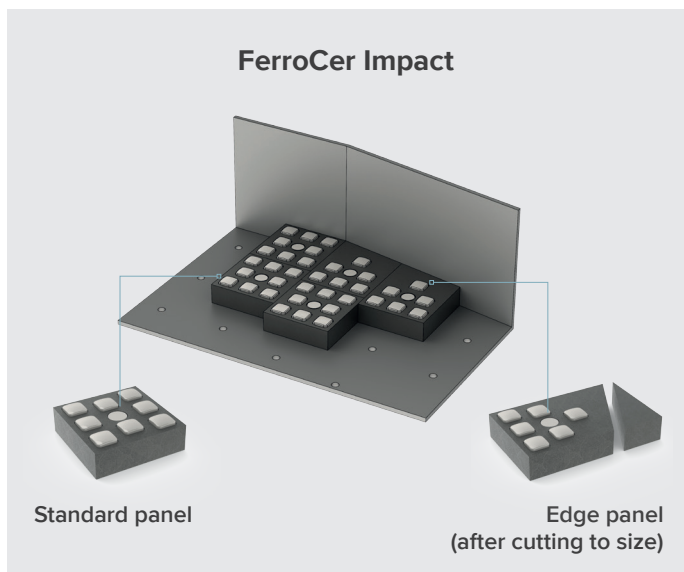
Each FerroCer panel comprises a set of abrasion-resistant ceramic inserts enclosed in a matrix of malleable steel. The matrix ensures only the top surface of the inserts is exposed to material impact. The sides of the inserts are tapered within the matrix, keeping the inserts in place and preventing material particles and fluids from damaging the panels.

Reduced environmental footprint






The longer wear life of our FerroCer panels translates into less material input, less waste and an improvement in your environmental footprint.

Smart FerroCer features

- Low weight and compact shape
- Available in two sizes
- Single-bolt installation
- No specialised tools required
- No installation training required



TECHNICAL SPECS

	Standard panel	Edge panel
	150 X 150 X 44 MM	225 X 150 X 44 MM
	5 KG	9 KG
 /m ²	45	30
	1 X M16 BOLT, NUT, WASHER	1 X M16 BOLT, NUT, WASHER
	100 °C / -40 °C	100 °C / -40 °C

Low weight and compact size

FerroCer Impact panels are compliant with the manual handling requirements of occupational health and safety organisations. Weighing in at only 5 kilos per panel (or 9 kilos per Edge panel) they have a compact, easy-to-handle size. That makes them safer and easier to install than typical bulky wear liners – and you only need standard hand tools.

Simple installation

Each panel is attached using a single countersunk bolt. An entire chute can be lined with the two types of FerroCer panels: the Standard panel covers most of the chute's surface; and the Edge panel is elongated to cover the chute's entry and exit points. The panels can also be trimmed to accommodate irregular shapes or corners.

Find out more about FerroCer Impact

To read some of our customer cases from hard-mineral mines around the world and find out more about FerroCer, go to

→ www.ferrocer.flsmidthminerals.com

Get a free savings assessment

We'll come to your mine and help you calculate your potential maintenance and operating cost savings using FerroCer.

Sign up for a savings assessment at

→ www.ferrocer.flsmidthminerals.com/contactus

Minerals Technology Center

FLSmidth USA Inc.
7158 S. FLSmidth Drive
Midvale, UT 84047-5559
USA
Tel: +1 801 871 7000
Fax: +1 801 871 7001
E-mail: info.sl@flsmidth.com

For more locations and contact details go to
www.flsmidthminerals.com/contact



flsmidth.com/linkedin



flsmidth.com/twitter



flsmidth.com/facebook



flsmidth.com/instagram



flsmidth.com/youtube